

« JUST THE FACTS »

Steering Angle Sensor

A Critical Safety Component

The Steering Angle Sensor is an important part of a vehicle's safety system. It transmits the steering wheel's rate of turn, wheel angle, and other important data to the specific vehicle's computer. If there is a fault in the signal, the computer can disable the vehicle's stability control.



Signs of a Faulty Steering Angle Sensor

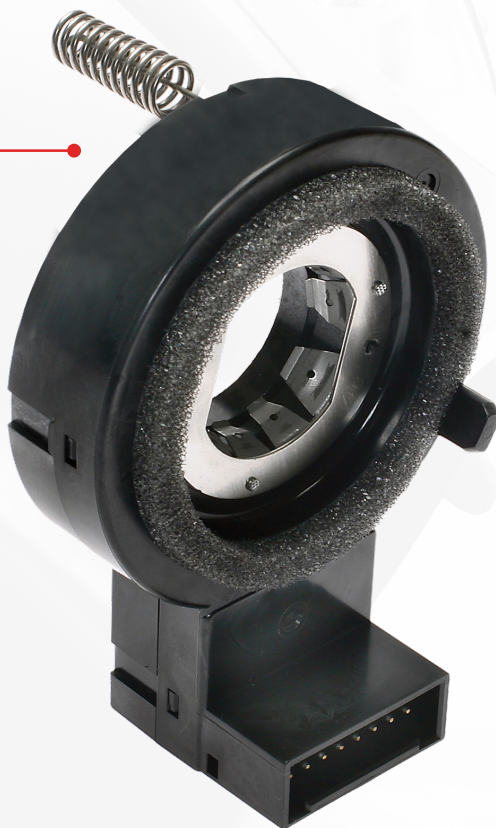
When a steering angle sensor fails, the vehicle may experience the following symptoms:

- Excessive play in the steering wheel
- Steering warning light illuminated in the dash
- Electronic Stability Control system is disabled

A Solution to Keep Your Stability Control System Enabled

Providing quality-manufactured replacement parts for this important safety category, Standard and Intermotor offer more than 40 steering angle sensors. To see what makes our steering angle sensors the best, take a look at our SWS24:

Direct-fit replacement ensures ease of installation and restoration of proper power steering function



SWS24

VIO over 5 Million
GM Full-size Trucks and SUVs
(2007-03)

Copper alloy conductors provide superior electrical conductivity with low resistive losses

High-grade plastic provides durability against extreme conditions