

SWITCHES AND RELAYS

Highlights

1

Standard® offers more than 10,000 high-quality Switches and Relays in hundreds of categories

2

Standard® has more than 370 Oil Pressure Switches, representing 377M repair opportunities

3

Most switches and relays are entirely powertrain neutral, meaning they fit gas, diesel, hybrid and electric vehicles



What's in your box?



STANDARD® SWITCHES

Growing Market

The world's leading research companies agree, the demand for automotive switches will experience solid growth in the coming years.

Electronic Safety Systems, enhanced infotainment features, and alternative powertrains all add to the complexity of the electrical systems on vehicles.

As the loads on electrical systems increase, the performance of switches and relays will be more critical than ever before.

“Automotive Switches are expected to grow at a compound annual growth rate of 7.6% from 2022 to 2030”

- Market Statsville Group, August 2022

“The automotive switch market will exhibit a compound annual growth rate of 5.81% during 2021-2027”

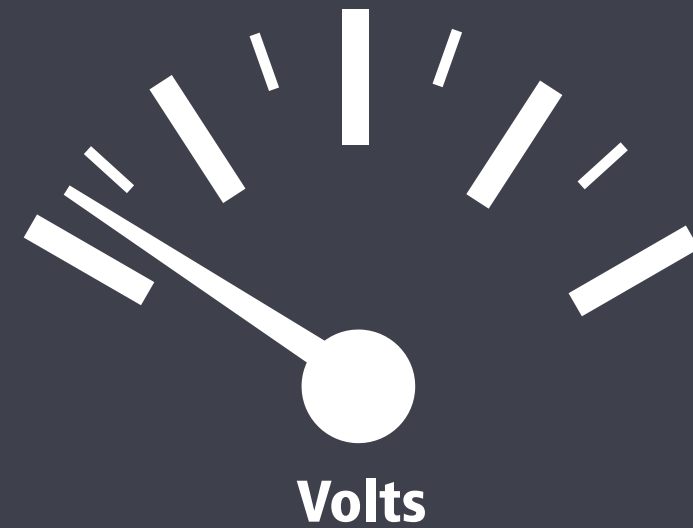
- Research and Markets, September 2022

“The automotive switch market is expected to grow at 7.8% annually over the forecast period from 2021-2028”

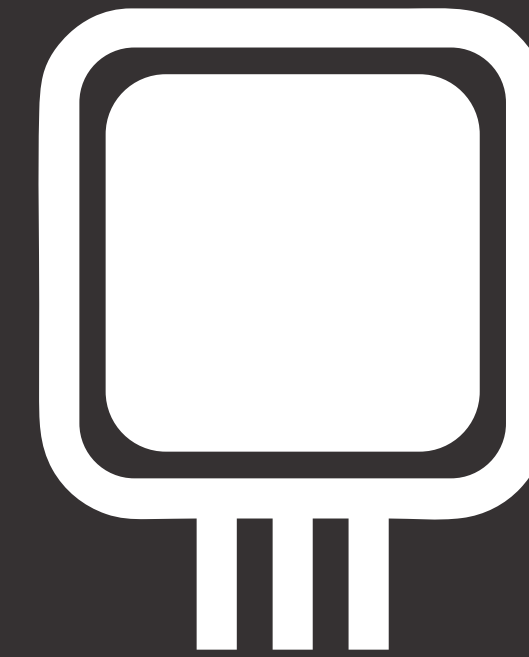
- Research Dive, September 2022

STANDARD® SWITCHES & RELAYS

Impact on Engine Systems



Poor or burnt contacts in a relay will cause a voltage drop to a component. This can cause damage to the component and affect the performance of the vehicle



Anytime a load-bearing electrical device fails, it is highly recommended to also replace the corresponding relay. It is good insurance on the new part



A failed cooling fan relay should be replaced immediately as it could lead to overheating. If a cooling fan relay has failed, it is recommended to thoroughly inspect the fan as well

STANDARD® SWITCHES

Your Complete Program

Standard® offers thousands of precision-engineered Switches across multiple categories. Our Switches are designed for both reliability and correct performance in all conditions.

Visit StandardBrand.com for more details on the Switches we offer for specific vehicles.

Standard® Switch Program

Chassis and Drivetrain Switches

Clutch Starter Safety Switches
Four Wheel Drive Actuator Switches
Four Wheel Drive Selector Switches
Fuel Pump Cut-Off Switches
Neutral Safety Switches
Transfer Case Switches
Transmission Control Switches

Pressure and Vacuum Switches

Oil Pressure Switches
Power Steering Pressure Switches
Transmission Oil Pressure Switches
Valve Timing Oil Pressure Switches

Body Light Switches

Back-Up Light Switches
Door Jamb Courtesy Light Switches
Hazard Light Switches
Headlight Dimmer Switches
Headlight Switches
Instrument Panel Dimmer Switches
Stoplight Switches
Turn Signal Switches

Ignition Switches

Ignition Switches with Lock Cylinder
Ignition Push Button Switches
Ignition Starter Switches

Interior Switches

Cruise Control Release Switches
Cruise Control Switches
Fuel Tank Selector Switches
Liftgate Release Switches
Clock Spring Switches
Parking Brake Switches
Power Door Lock Switches
Power Seat Switches
Power Window Switches
Remote Mirror Switches
Windshield Wiper Switches
...and more



STANDARD® RELAYS

Your Complete Program

Standard® has more than 1,125 Relays that cover more than 225 different categories. Our complete Relay program ensures that you find the part you are looking for, with the quality and performance you expect from Standard®.

Visit StandardBrand.com for more details on the Relays we offer for specific applications.

Standard® Relay Program

A/C Compressor Clutch Relays

Daytime Running Lamp Relays

Multi-function Relays

ABS Relays

Electronic Brake Control Relays

Overdrive Relays

AC Relays

Engine Control Relays

Power Door Lock Relays

Accessory Relays

Flashers

Power Window Relays

Adjustable Pedal Relays

Headlight Dimmer Switch Relays

Rear Window Defogger Relays

Air Bag Relays

Heated Mirror Relays

Rear Window Wiper Relays

All Wheel Drive Control Relays

Horn Relays

Secondary Air Injection Pump Relays

Automatic Headlight Relays

Ignition Control Module Relays

Trailer Towing Package Relays

Check Lamp Relays

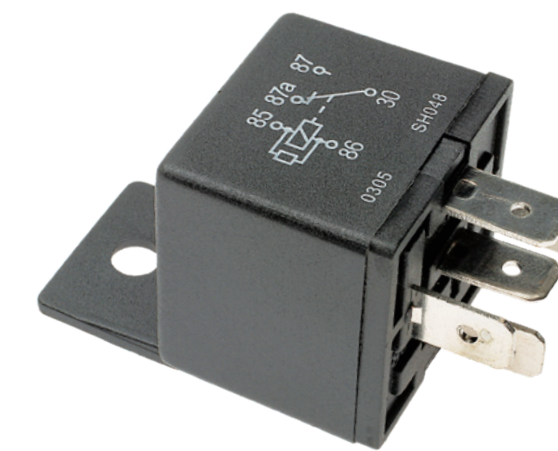
Ignition Relays

Wiper Relays

Coolant Fan Relays

Keyless Entry System Relays

...and hundreds of more applications



STANDARD® OIL PRESSURE SWITCHES

What's New

Standard® has over 370 Oil Pressure Switches representing almost 400 million repair opportunities. Our industry-leading coverage gets better all the time with the frequent release of Switches for import and domestic vehicles.

For the most recent applications check the online catalog at www.standardbrand.com.



PS764
Oil Pressure Light Switch
Toyota / Lexus
Gas and Hybrid Cars
(2021-18)
VIO: 1.3M



PS771
Oil Pressure Light Switch
Jeep, RAM, and Chrysler Cars
& SUVs
(2022-17)
VIO: 1.3M



PS763
Oil Pressure Gauge Switch
Porsche 911
(2008-1997)
VIO: 81K



STANDARD® POWER WINDOW SWITCHES

What's New

Standard® has over 1,400 Power Window Switches, representing 700 million repair opportunities. New Power Window Switches, along with Cruise Control Switches, Power Seat Switches, and other interior Switches are being introduced regularly.

For the most recent applications check the online catalog at www.standardbrand.com.



DWS2135
Ford Gas & Hybrid Trucks & SUVs
(2022-2020)
VIO: 950K



DWS2184
Honda Trucks & SUVs
(2020-2017)
VIO: 1.14M



DWS2179
Jeep Wrangler
(2022-18)
VIO: 724K



STANDARD® IGNITION SWITCHES

What's New

Standard® offers more than 456 Ignition Switches covering 200 million vehicles on the road. New Ignition Switches in every style are being added to make sure you have the late-model coverage you need.

For the most recent applications check the online catalog at www.standardbrand.com.



US1501
Ignition Push Button Switch
Honda CR-V
(2018-16)
VIO: 281K



US1499
Ignition Starter Switch
GM Trucks
(2020-19)
VIO: 1.02M



US1500
Ignition Switch with Lock
Cylinder
Nissan NV Vans
(2015-2014)
VIO: 24K



STANDARD® OIL PRESSURE SWITCHES

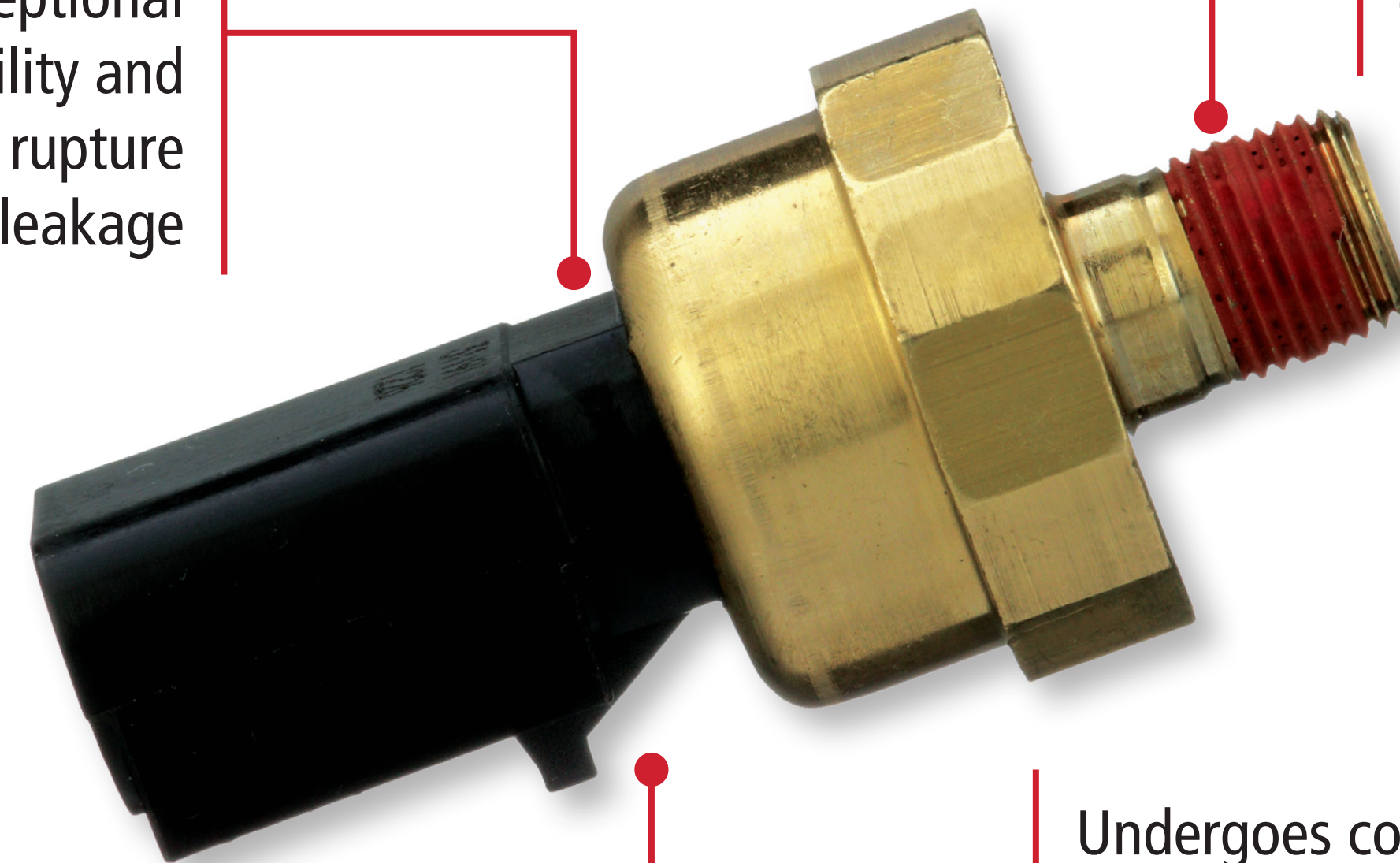
A Closer Look

Oil Pressure Switches are critical for monitoring the status and health of engines. Standard® Oil Pressure Switches undergo computer-controlled calibration to ensure precise performance in all conditions.

Standard® Oil Pressure Switches

High-temp, ceramic pressure sensors provide exceptional cycle durability and resistance to rupture and oil leakage

Includes pre-applied thread sealant for easy install right out of box



Undergoes computer-controlled pressure calibration testing to ensure accurate reading of actual oil pressure in vehicle's engine

PS-317
Dodge/Chrysler/Jeep/Ram
(2017-99)

STANDARD® OIL PRESSURE SWITCHES

Top Movers

**IMPORT
APPLICATIONS**



PS160

Multiple applications, see standardbrand.com for details



PS411

Hyundai / Kia Cars & SUVs (2020-04)



PS305

Toyota / Lexus Cars & SUVs (2020-93)



PS198

Honda / Acura Cars & SUVs (2008-84)



PS445

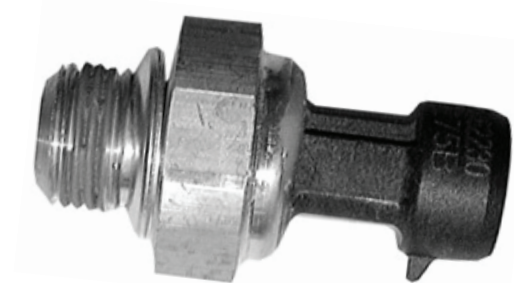
Subaru Cars & SUVs (2012-06)

**DOMESTIC
APPLICATIONS**



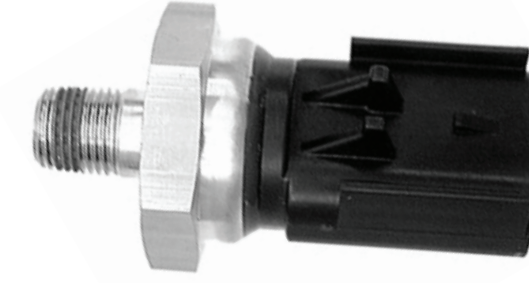
PS508

GM Cars, Trucks & SUVs (2020-09)



PS308

GM Cars, Trucks & SUVs (2009-97)



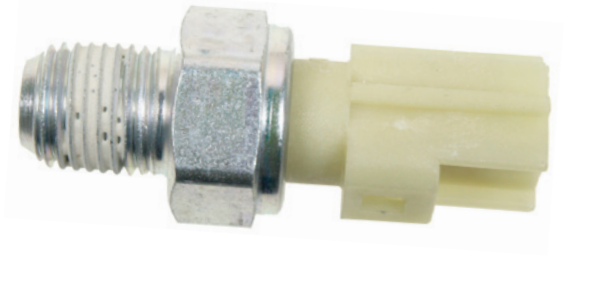
PS317

Dodge, Jeep, Chrysler, RAM (2017-99)



PS404

Dodge, Jeep, Chrysler, RAM (2013-03)



PS427

Ford, Lincoln, Mercury (2019-99)

STANDARD® IGNITION SWITCHES

A Closer Look

Standard® Ignition Switches are a direct replacement to the original. They are designed to install easily and for precise function.

Ignition Switches are also 100% powertrain neutral, meaning they will represent service opportunities for years to come.

Standard® Ignition Switch with Lock Cylinder

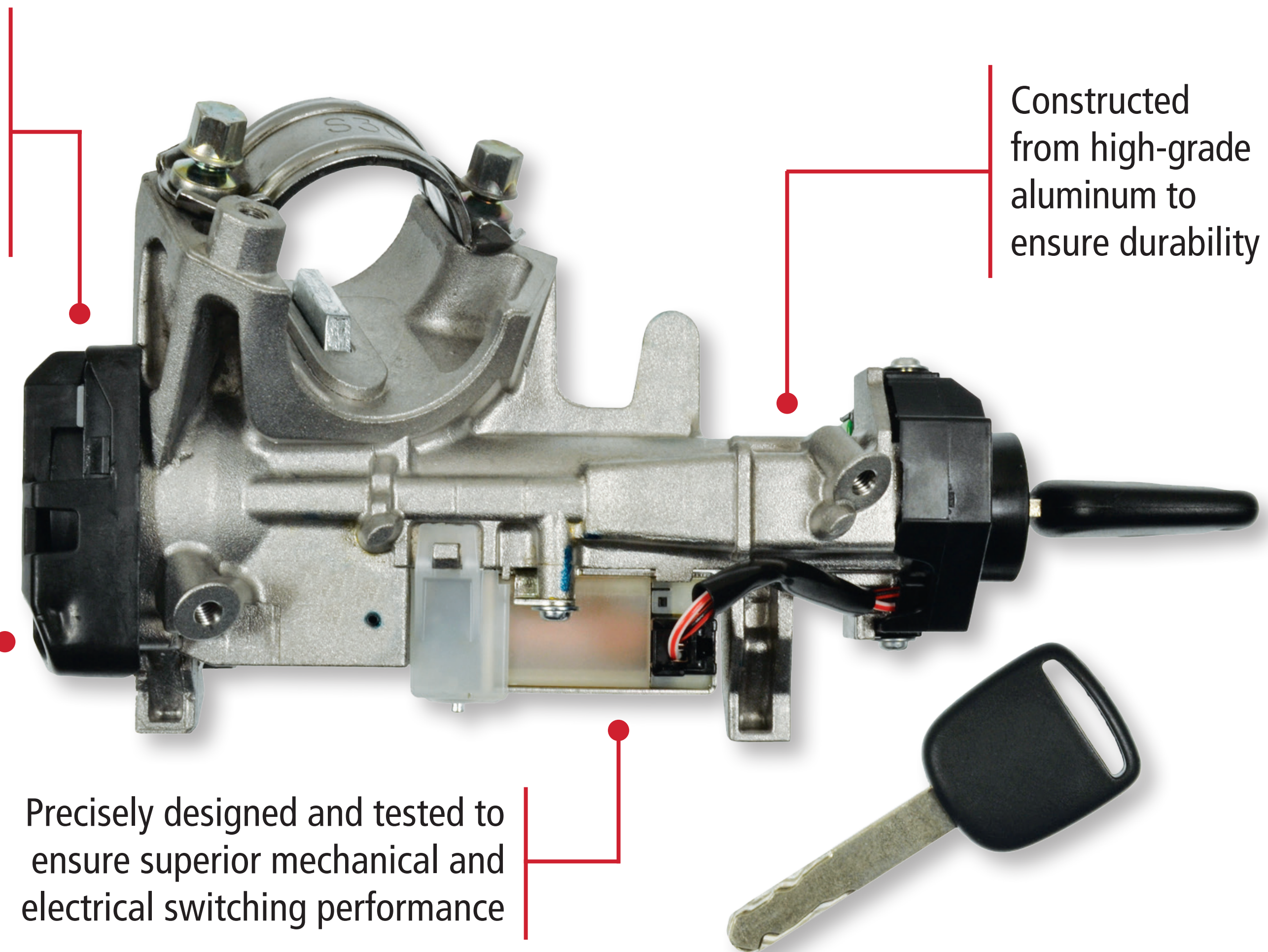
Copper alloy conductors ensure superior electrical conductivity with low resistive losses

US1154
Honda
(2013-08)

100% tested for proper fit, form, and function

Precisely designed and tested to ensure superior mechanical and electrical switching performance

Constructed from high-grade aluminum to ensure durability



Standard® also offers the newer style push button ignition switches for import and domestic vehicles

STANDARD® IGNITION SWITCHES

Top Movers

**IMPORT
APPLICATIONS**



US489

Honda / Acura Cars & SUVs
(2013-03)



US1010

Hyundai / Kia Cars & SUVs
(2019-10)



US512

Honda / Acura Cars
(2003-98)



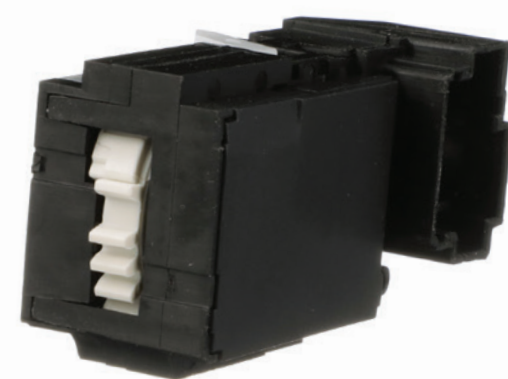
US693

Hyundai / Kia Cars & Vans
(2014-07)



US362

Nissan Cars, Trucks & SUVs
(2019-00)



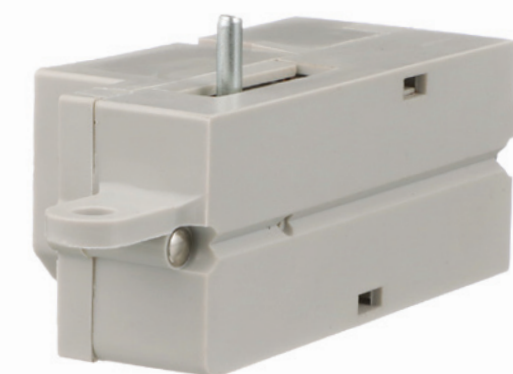
US331

GM Cars, Trucks & SUVs
(2011-02)



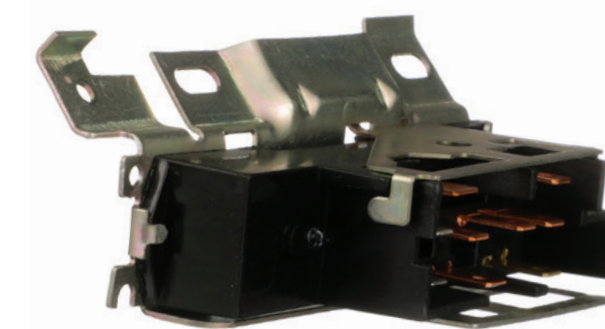
US431

Ford / Mercury
Cars, Trucks & SUVs
(2019-01)



US216

Ford / Mercury
Cars, Trucks & SUVs
(2019-01)



US105

Multiple applications, see
standardbrand.com
for details



US521

Chrysler, Dodge, Jeep
Cars & SUVs
(2017-01)

**DOMESTIC
APPLICATIONS**

STANDARD® INTERIOR SWITCHES

A Closer Look

Standard® offers thousands of direct-replacement interior and driver/passenger-operated switches. All Standard® interior switches are designed and manufactured for a precise fit and correct on-vehicle performance. Interior switches are also entirely powertrain neutral.

Standard® Combination Switches

Robust design with high-grade materials meets the stringent demands of today's service professional

Direct-fit, electrically operated switch replaces damaged OE units, restoring cruise control function in the process



CBS1958
Nissan / Infiniti SUVs
(2015-07)

Copper alloy conductors ensure superior electrical conductivity with low resistive losses

STANDARD® COMBINATION SWITCHES

Top Movers

**IMPORT
APPLICATIONS**



CBS1770

Hyundai / Kia Cars & SUVs
(2012-06)



CBS1006

Toyota Cars, Trucks & SUVs
(2004-98)



CBS1958

Nissan / Infiniti SUVs
(2015-07)



CBS1794

Toyota Cars & SUVs
(2015-05)



CBS1079

Honda / Acura Cars & SUVs
(2008-00)

**DOMESTIC
APPLICATIONS**



CBS2293

Ford Trucks
(2020-15)



CBS2141

Ford Trucks
(2012-11)



CBS1333

GM Cars
(2011-04)



CBS1332

Ford / Lincoln Trucks
(2008-06)



CBS1149

GM Trucks & SUVs
(2007-01)

STANDARD® POWER WINDOW SWITCHES

Top Movers

**IMPORT
APPLICATIONS**



DWS455
Hyundai Cars
(2015-10)



DS2323
Toyota / Scion
Cars, Trucks & SUVs
(2008-95)



DWS371
Nissan Trucks & SUVs
(2019-07)



DWS1455
Toyota / Scion Cars & Vans
(2010-02)



DWS322
Nissan Trucks & SUVs
(2010-10)

**DOMESTIC
APPLICATIONS**



DWS136
GM Cars, Trucks & SUVs
(2016-07)



DS2158
Ford / Lincoln
Cars, Trucks & SUVs
(2008-03)



DWS1711
Chrysler, Dodge and RAM
Vans & Trucks
(2022-12)



DWS220
GM Trucks & SUVs
(2007-03)



DWS1386
Dodge / RAM
(2012-09)

STANDARD® RELAYS

A Closer Look

Standard® Relays are the product of high-quality design, manufacturing and testing. With over 1000 different Relays, Standard® has the Relay you want with the quality and performance your customers need.

Standard® Pro Training Tip

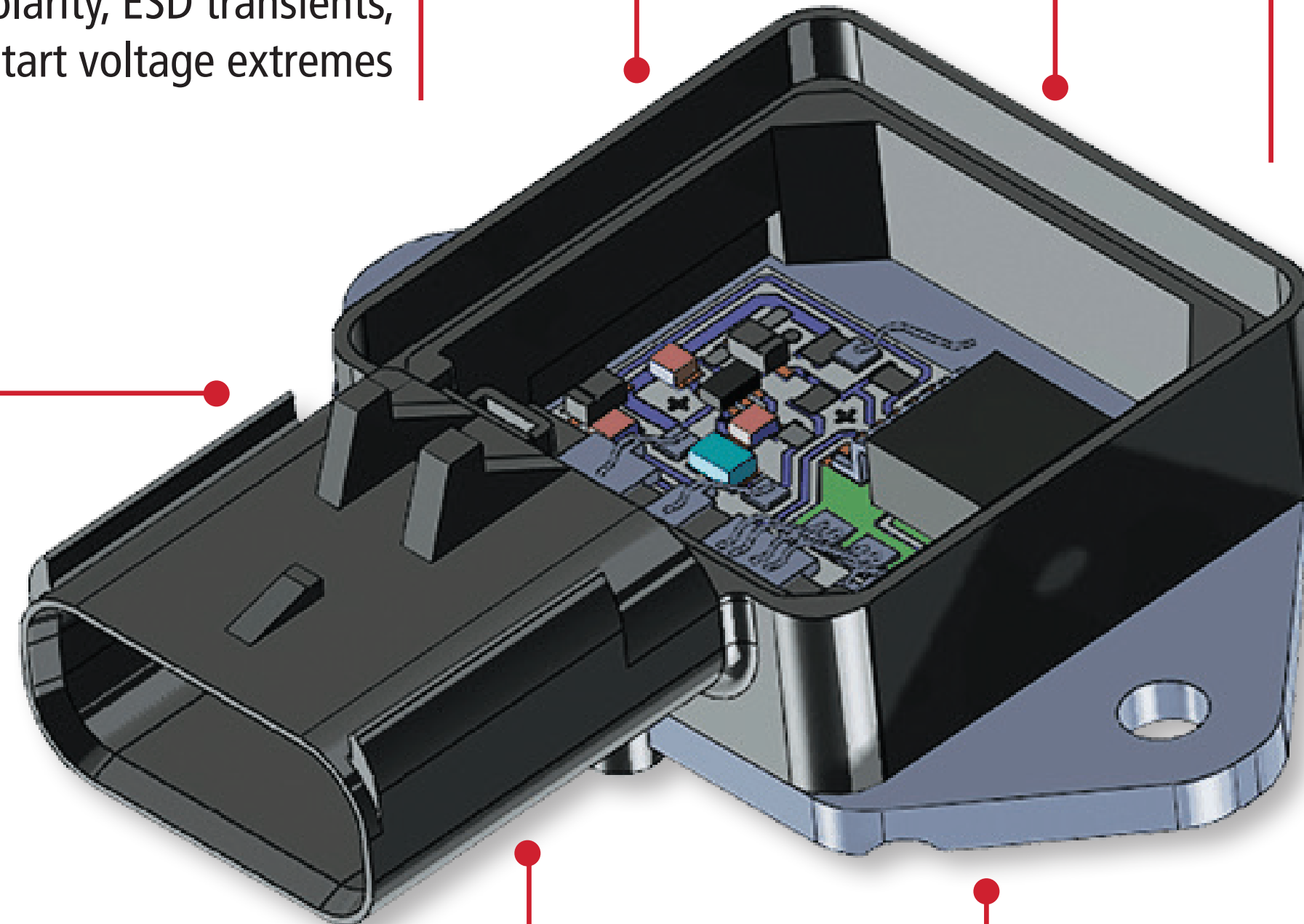
On Standardbrand.com, you can search "relay" and quickly filter by amperage and terminal type.

Standard® Engine Cooling Fan Module

Circuitry is designed to withstand electrical over-stress conditions such as reverse polarity, ESD transients, and jump start voltage extremes

100% tested prior to shipping for continuous current load, quiescent current, voltage drop, pull-in current, voltage and hysteresis

100% tested for proper fit, form, and function



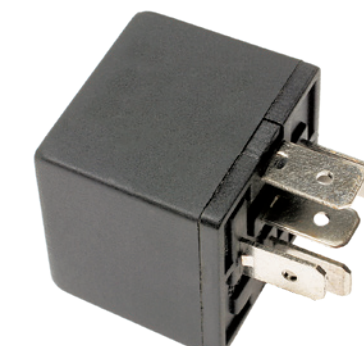
RY-330
Dodge / Chrysler
Plymouth / Jeep
(2000-96)

Copper terminals with aluminum inlay keep electrical resistance low and still provide benefits for wire bonding and corrosion protection

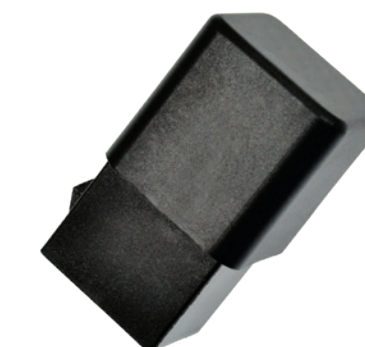
Aluminum heat sink provides excellent corrosion resistance and thermal conductivity



Flashers



**Accessory
Relays**



**Starter
Relays**

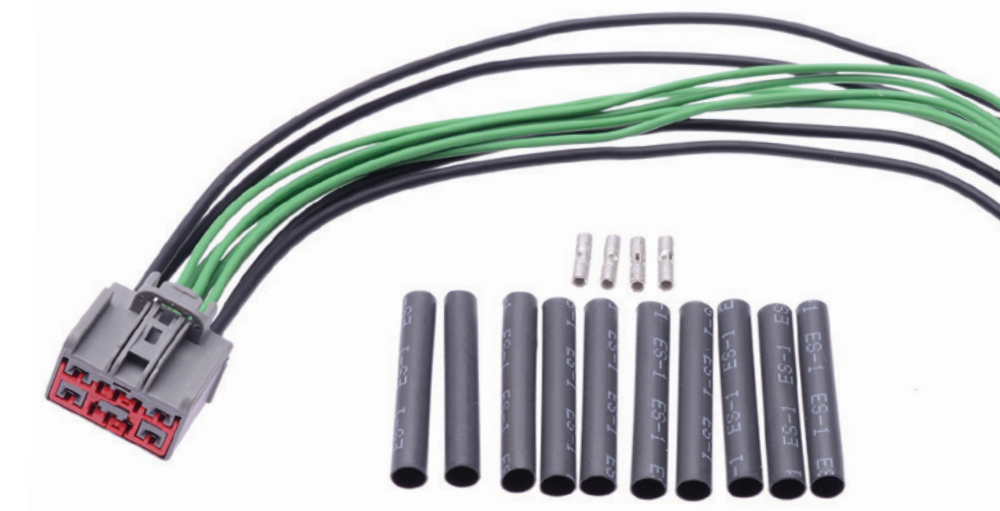
STANDARD® SWITCHES

Related Parts

In addition to over 70 different types of Switches we also offer the high-quality Connectors you need to get your customers back on the road.

To find the Connector you are looking for, visit StandardBrand.com.

Standard® Switch Connectors



Multi-function Switch Connectors

Door Jamb Switch Connectors

Door Cylinder Anti-Theft Switch Connectors

Oil Pressure Switch Connectors

Door Lock Position Switch Connectors

Coolant Fan Switch Connectors

Heated Seat Switch Connectors

Four Wheel Drive Selector Switch Connectors

Fuel Pump Cut-Off Switch Connectors

Seat Belt Switch Connectors

Fuel Door Release Switch Connectors

Coolant Fan Switch Connectors

Backup Light Switch Connectors

Clutch Pedal Switch Connectors

...and more

Standard[®] Pro Training Tech Tip

As experienced ASE-certified automotive technicians themselves, Standard[®] Pro Trainers are experts in engine and sensor technology.



Some switches are “normally open,” some are “normally closed” and others communicate data. Having a vehicle-specific wiring diagram can save time during any electrical diagnostic procedure



On many modern vehicles, the brake light switch will need to be programmed with a scan tool after installation

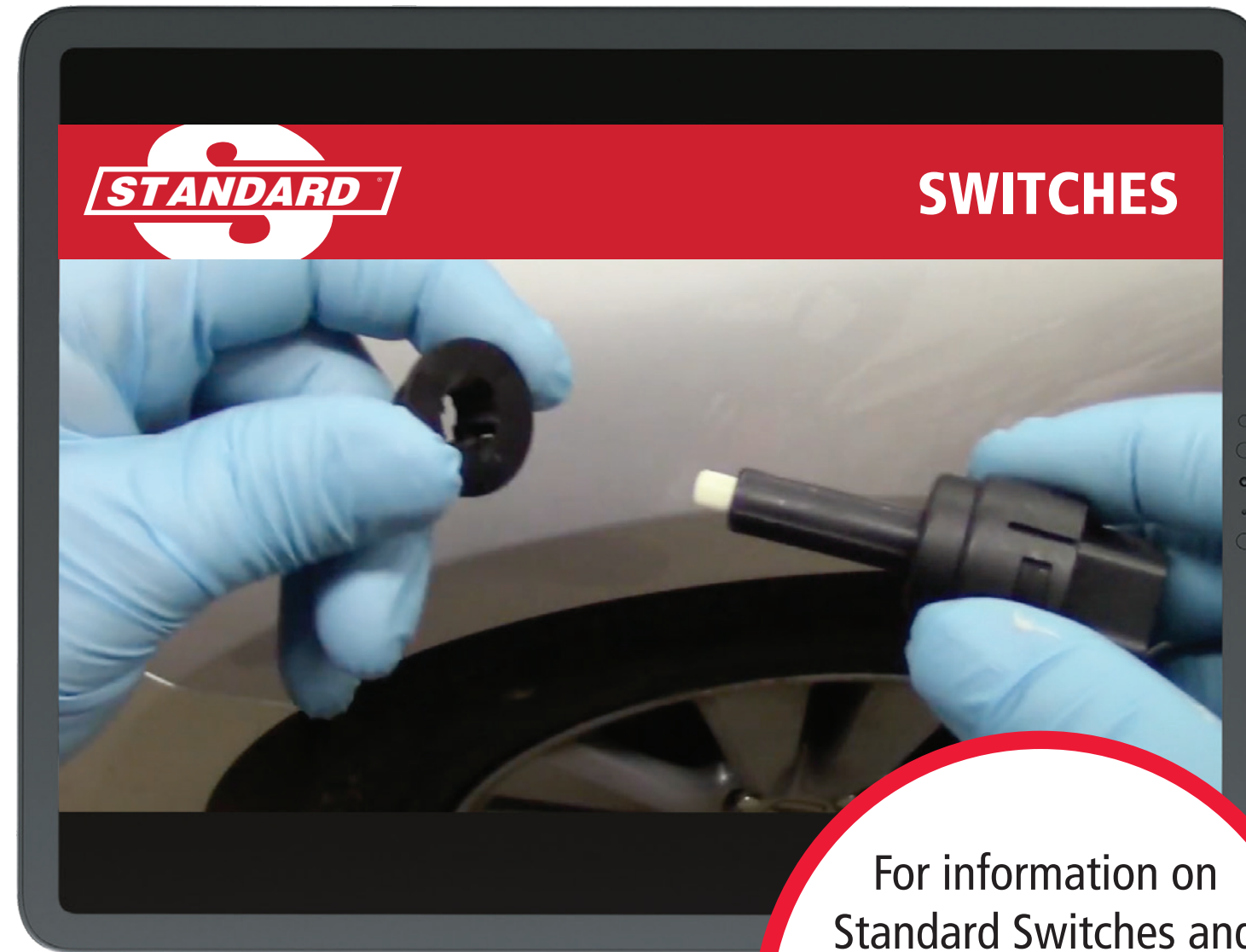
STANDARD® SWITCHES & RELAYS

Standard® Professional Training

**Award-Winning In-Person, Live
Virtual, and Online Learning**

Standard® Pro Training delivers accredited classes that educate technicians in the latest automotive repair technologies, and techs can earn CEU credits.

An extension of Standard® training, our extensive ADA-compliant YouTube professional installation video library has over 40 million views and 50,000+ channel subscribers.



For information on
Standard Switches and
Relays search "Switches"
or "Relays" on the
StandardBrand YouTube
Channel



Available Classes

Relay Testing and Diagnosis

Labscope

Vehicle Electronic Fundamentals 1-7

Diagnosing Electronic 4WD Controls

Diagnosing Electronic Fuel Pump
Controls

IN-PERSON TRAINING



Available Classes

Powertrain Electronics

Body Control Electronics Diagnosis

Labscope Power User

Domestic Anti-theft

Visit StandardBrandTraining.com