

COLLISION REPAIR PROGRAM



2026



WHAT'S IN YOUR BOX?™

HERE'S WHAT'S IN OURS.



7,400+
REPLACEMENT PARTS

Standard® offers more than 7,400 parts that may need to be replaced in the event of a collision



Collision repair categories include undercar components, ADAS components, Active Grille Shutters and more

100%
TESTED & VALIDATED

All collision components are extensively tested and validated to ensure proper fit and performance



Collision Repair Program

StandardBrand.com

What is the Standard® Collision Program?

Historically, Standard® has been known for its extensive engine management product line. As vehicles have become more complex, we have grown to offer many of the sensors, actuators, and components found on today's vehicles.



The Standard® Collision Program includes many of the components that may be easily damaged in a collision. These parts include:

- Advanced Driver Assistance Systems (ADAS) Cameras and Sensors
- Cabin Components
- Closure System Components
- Lighting Components
- Sensor Connectors and Connector Kits
- Undercar Components
- Underhood Components



What's New

Active Grille Shutter Assemblies

Still a newer category, Standard® has been continuously releasing Active Grille Shutters, especially for late-model vehicles.

For up-to-date listings on Active Grille Shutters and Actuators, visit StandardBrand.com.

Did You Know

All Standard® Active Grille Shutters include a new actuator, but sometimes, only an actuator is required. Standard® also offers Active Grille Shutter Actuators separately, which can be installed quickly to help optimize performance, cooling and efficiency.



AGS1048
RAM 1500
(2020-15) VIO: 1.4M



AGS1047
Nissan Rogue
(2023-21) VIO: 686K



AGS1041
Jeep Cherokee
(2022-19) VIO: 616K



AGS1051
Volkswagen Jetta
(2021-18) VIO: 292K



What's New

Park Assist Cameras

Park assist cameras are one of the most frequently replaced ADAS components. Standard® is regularly releasing new Park Assist Cameras to make sure you have the parts needed to service your customers' vehicles.

For the most current applications, check out our catalog at StandardBrand.com.



PAC556

Honda Civic
(2021-17) VIO: 1.4M



PAC558

Nissan Rogue
(2020-16) VIO: 1.3M



PAC531

Chrysler Minivans
(2024-18) VIO: 530K



PAC588

Toyota Corolla
(2019-14) VIO: 1.5M



ADAS Coverage and Opportunities

Standard® offers an aftermarket-leading 900+ ADAS numbers in key Advanced Driver Assistance System categories, and we're continually adding to this growing product line.

Since many of today's vehicles have multiple advanced ADAS parts per vehicle, we're covering more than 700 million part replacement repair opportunities!

Standard® ADAS Coverage



ADAS Components

Advanced Driver Assistance Systems in today's vehicles are already helping to save lives and prevent injuries.

Minimizing human error by notifying the driver of a potential collision has been identified as a key factor in reducing the number of vehicle collisions that may result in serious injury or death.



Park Assist Sensors

Vehicles use multiple park assist sensors on front and rear bumpers to report distance to an object, utilizing an ultrasonic signal. These sensors are often damaged in front or rear collisions.

Standard® Park Assist Sensors are direct-fit replacements that match the damaged OE units they are replacing.

192 SKUs / VIO: 217M



Park Assist Cameras

Easily damaged in a rear collision, park assist cameras have been mandatory in the U.S. since 2019. Most cameras are replaceable without additional programming or calibration.

As premium replacements for the failed OE unit, Standard® Cameras are “plug & play” – no programming required. Each Camera is rigorously tested to match OEM vehicle-specific performance.

293 SKUs / VIO: 159M



ADAS Components

Sophisticated collision-avoidance components are ever-expanding in today's vehicles. Standard® continues to grow this important safety category.

Did You Know

Blind spot detection sensors are also prone to failure due to corrosion from salt spray entering the casing and destroying the circuit board inside.



Blind Spot Detection Sensors

Located in the rear quarter area, typically just behind the bumper cover, blind spot detection sensors are often damaged in rear-end collisions.

Standard® BSD Sensors are direct-fit replacements to ensure proper fit and performance. All BSD Sensors undergo extensive quality testing and product validation.

71 SKUs / VIO: 41M



Lane Departure System Cameras

Typically located on the windshield behind the rearview mirror, lane departure system cameras are now also in side-view mirrors for additional protection.

Standard® LDS Cameras are rigorously tested for fit, form and precise performance to match the original application they are replacing.

34 SKUs / VIO: 32M



Cruise Control Distance Sensors

Located behind the front grille opening area, cruise control distance sensors are often damaged in a frontal collision.

Standard® CCD Sensors are designed and manufactured to stringent quality standards to match the original for an easy install and to deliver precise performance.

49 SKUs / VIO: 31M



Steering Angle Sensors

Located in the steering column, these sensors are often damaged in frontal collisions.

Crash Avoidance Systems are dependent on accurate, timely data from the steering angle sensor. Standard's vehicle-specific Steering Angle Sensors are designed and tested to integrate with ADAS systems.

Available for millions of popular import and domestic vehicles



Standard® Quality

Park assist sensors help keep your customers safe. The quality and performance of the part matters, which is why Standard® tests each part to make sure it integrates correctly with safety systems, and functions in all conditions.

Standard® Park Assist Sensors

Performance

Advanced ultrasonic detection technology alerts the driver of objects within the vehicle's path

European Manufactured

Engineered and manufactured in SMP's IATF 16949 and ISO 9001-certified facility in Poland

Accuracy

Designed to match the performance of the original and integrate with electronic safety systems

PPS45

GM, Chrysler, Dodge, Jeep & RAM
(2022-09)

Durability

Includes a new seal to help keep moisture out for a long service life



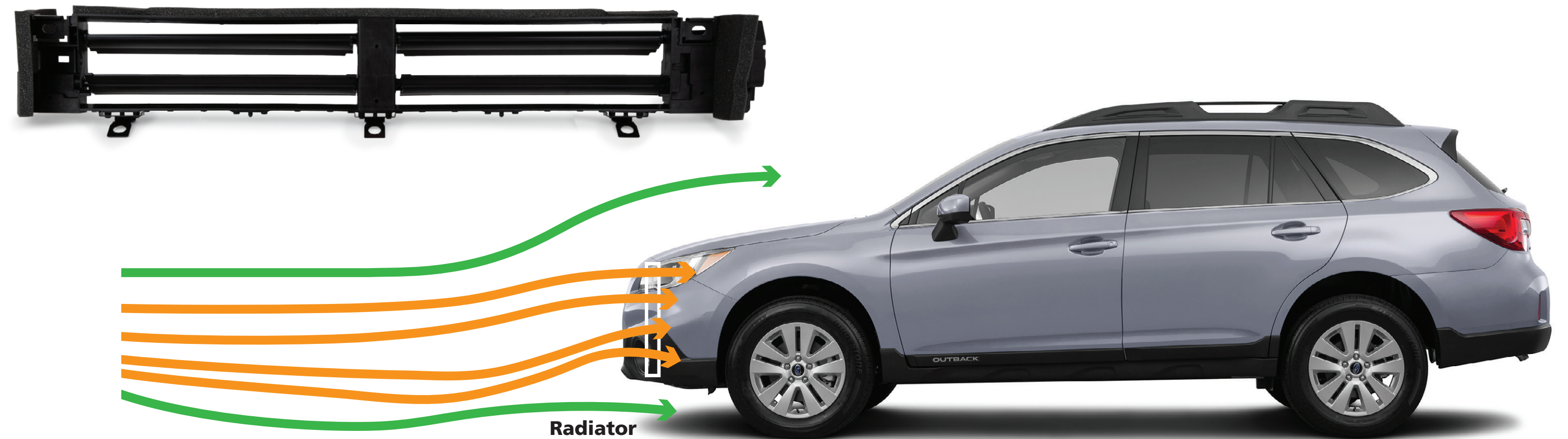
Product Spotlight

Active Grille Shutters & Actuators

Operated by an electronic actuator, active grille shutters open and close to control the airflow to the engine compartment and over the vehicle. They open to provide the radiator and cooling system with additional fresh air and close to help an engine warm up faster. They can also close to redirect air over the vehicle, improving aerodynamics and fuel mileage.

Active grille shutters are even used on some hybrid and electric vehicles for battery cooling and to help improve range.

Open: Air flows into the radiator for cooling



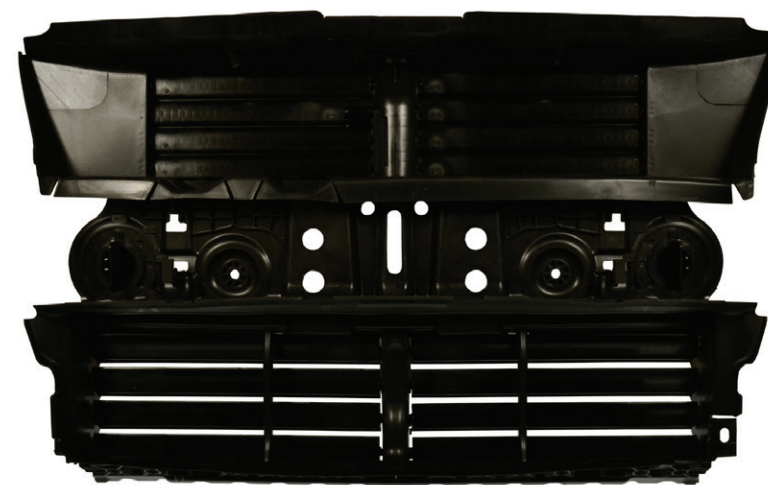
Closed: Air flows over the vehicle, improving efficiency



Underhood Components

Standard® underhood components include a variety of advanced technology parts designed to work in conjunction with modern powertrains. These components are easily damaged in collisions and can fail due to harsh environmental conditions.

The Standard® underhood category offers coverage for millions of import and domestic vehicles.



Active Grille Shutter Assemblies

These are high OE failure components due to motor burnout as well as collisions. Standard® AGS are direct-fit and specifically engineered for the application they are replacing, and are built from high-grade industrial plastic to resist corrosion and withstand extreme engine temperatures. All Standard® AGS undergo 100% end-of-line testing.

49 SKUs / VIO: 33M



Ambient Air Temp Sensors

Standard® offers a full line of Ambient Air Temp Sensors covering import and domestic vehicles through model-year 2024. Each Standard® ATS is engineered and tested for extreme conditions. We now offer some Ambient Air Temp Sensors as a kit with new connectors and wires as a complete repair solution.

115 SKUs / VIO: 245M



Active Grille Shutter Actuators

Active grille shutter actuators control active grille shutters, allowing them to open and close to direct airflow. These are also easily damaged in front-end collisions and can fail over time. Standard® Active Grille Shutter Actuators are precision engineered and tested to work with both the OE and Standard® Active Grille Shutters.

14 SKUs / VIO: 15M



Turbo Intercoolers

Designed, manufactured and tested to stringent quality standards, and match the original to deliver precise vehicle-specific performance. Standard® Intercoolers are 100% new, not remanufactured, and are built from the highest-quality materials to withstand harsh conditions for a long service life. 100% factory tested for air/water leaks.

23 SKUs / VIO: 10M



Undercar Sensors

Undercar sensors are susceptible to damage from harsh environmental conditions and collisions. The vehicle speed sensor is located in the transmission, or on the rear of the transfer case for 4WD vehicles. Speed sensors are usually plastic and are subject to damage in a collision.

Ride height sensors are a highly sensitive suspension system component with fragile linkages that can also be easily damaged in a collision.



TPMS Sensors

The Standard® TPMS Sensor Program gives technicians a choice of the programmable QWIK-SENSOR® or the ready-to-install OE-Match Sensor. We also offer TPMS service kits and tools.

Available for millions of popular import and domestic vehicles



Vehicle Speed Sensors

Standard® Vehicle Speed Sensors feature OE-exact connectors and terminals delivering the precise OE output signal to ensure accurate readings and performance. Each Sensor is 100% tested and validated to ensure precise operation.

390+ SKUs / 339M Repair Opportunities



ABS Speed Sensors

Standard® ABS Sensors are engineered and tested to correctly integrate with electronic crash avoidance systems and to help reduce stopping distance in all conditions.

2,400+ SKUs / 757M Repair Opportunities



Ride Height Sensors

Standard® Ride Height Sensors come with sensor, linkage and mounting bracket for a complete assembly and easy installation.

32 SKUs / VIO: 30M



Lighting Components

Most lighting components are located in or near the headlamp assembly where they can be easily damaged in a front-end collision.

HID modules are prone to damage due to sensitive internal circuitry, and headlight level mechanisms often include actuator arms that are easily bent or damaged.

Located to maximize visibility, center high mount stoplight assemblies are unprotected, with lenses and interior components that often break on impact.



HID Modules (HID Headlight Ballasts)

Standard® HID Modules feature OE-match internal circuitry with heavy-duty casings around electronics for durability. DOT-certified to comply with Federal Motor Vehicle Safety Standards.

45 SKUs / VIO: 29M



Blue Streak® High-Temp Headlight Connectors

“Plug & play” between the factory harness and new bulb for easy installation on vehicles with HID headlights. High-temp Connectors prevent melting caused by high-intensity bulbs.

11 SKUs / VIO: 147M



Headlight Level Sensors

Direct-fit replacements restore the headlight self-leveling system function for improved visibility. These Sensors undergo rigorous testing to ensure proper performance under all conditions.

41 SKUs / VIO: 10M



Center High Mount Stoplight Assemblies

Quality-designed to prevent water intrusion, which can lead to brake light failure, these OE-matching replacements ensure proper fit, form, and function for an easy installation.

Coverage for popular import and domestic vehicles



Standard® Quality

OE HID headlight modules often fail due to overheating, moisture intrusion, or collision damage. To restore lighting function, we created direct-replacement HID Headlight Modules — parts that match the fit, form, and function of the originals.

Standard® HID Headlight Modules are DOT certified to comply with Federal Motor Vehicle Safety Standards.

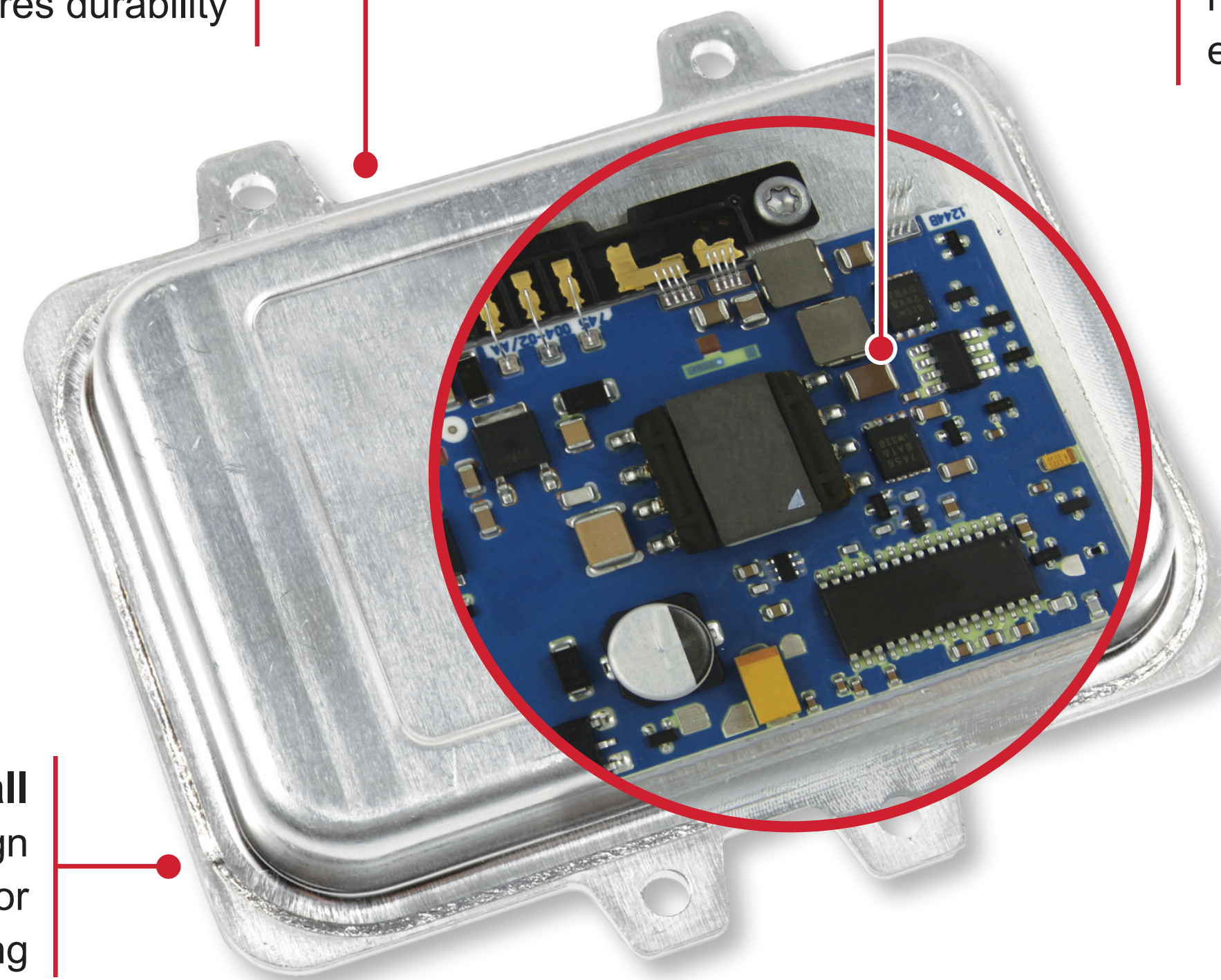
Standard® HID Headlight Modules

Durability

Heavy-duty casing
around electronics
ensures durability

Accuracy

Internal circuitry
matches OE design to
ensure performance



Easy to Install

'Plug & play' design
means no need for
reprogramming

HID110

GM, BMW, VW, Hyundai,
Mercedes-Benz, Ford, Jaguar
(2019-00)



Collision Repair Program

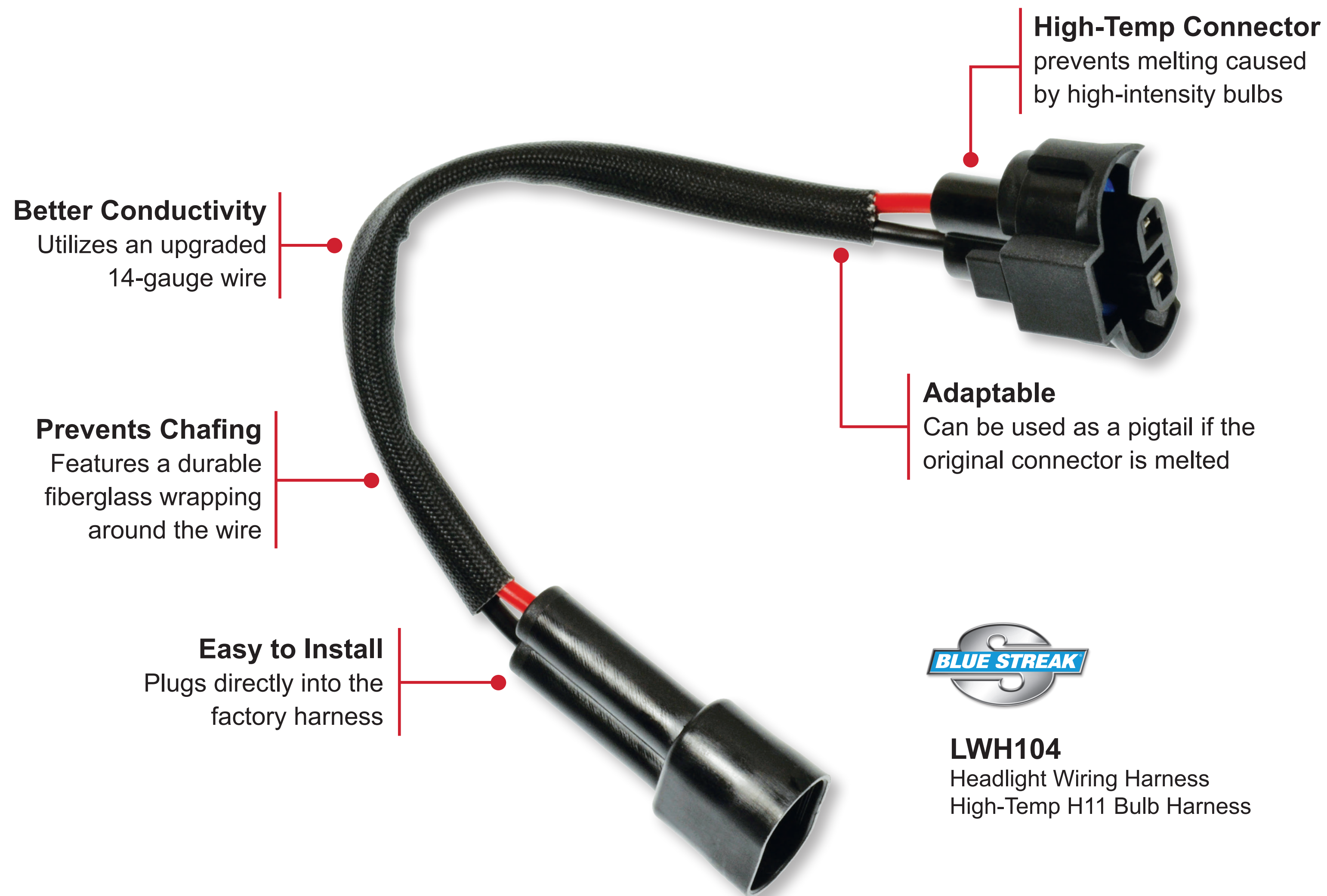
StandardBrand.com

Standard® Quality

The heat generated by today's OE automotive light bulbs can melt the bulb's connectors. To prevent this, Blue Streak® Headlight Wiring Harnesses are built with high-temp connectors that withstand extreme heat.

The harnesses also have 14-gauge wire for better conductivity and a “plug and play” feature that lets you plug the harness right between the factory harness and the bulb.

Blue Streak® High-Temp Headlight Wiring Harnesses



LWH104
Headlight Wiring Harness
High-Temp H11 Bulb Harness



Closure System Components

Door lock actuators are mounted in the doors and can be damaged any time a door is impacted.

Trunk latches/actuators and liftgate actuators are located in the trunk or liftgate area and are easily damaged in a rear-end collision, while hood latches and actuators are impacted by a front-end collision.

Did You Know

The door lock actuator on the driver's door is the most replaced as it experiences more wear than the others.



Door Lock Actuators

This growing line features integrated and non-integrated Actuators. All Standard® DLAs meet FMVSS (Federal Motor Vehicle Safety Standards) requirements for door ejection safety.

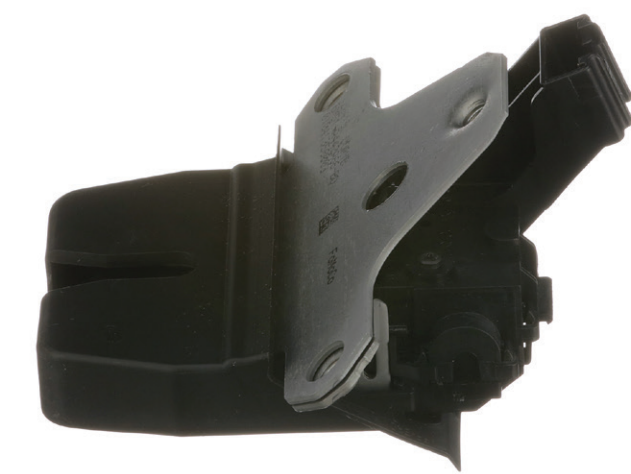
906 SKUs / 963M repair opportunities



Hood Latch Assemblies

Direct-fit OE replacement features "plug & play" design for easy install. Designed to meet FMVSS (Federal Motor Vehicle Safety Standards).

27 SKUs / VIO: 18M



Trunk Lock Actuators

Matches the original for application-specific performance and an easy install. Designed to meet Federal Safety Standards.

22 SKUs / VIO: 23M



Liftgate and Tailgate Actuators

Direct-fit OE replacement ensures proper fit and form to precisely match the function and performance of the original unit.

32 SKUs / VIO: 40M



Standard® Quality

Standard® Integrated Door Lock Actuators combine electrical actuation with latch mechanization. Standard® offers a line of Integrated Door Lock Actuators that are all direct OE replacements to ensure a easy installation and proper performance.

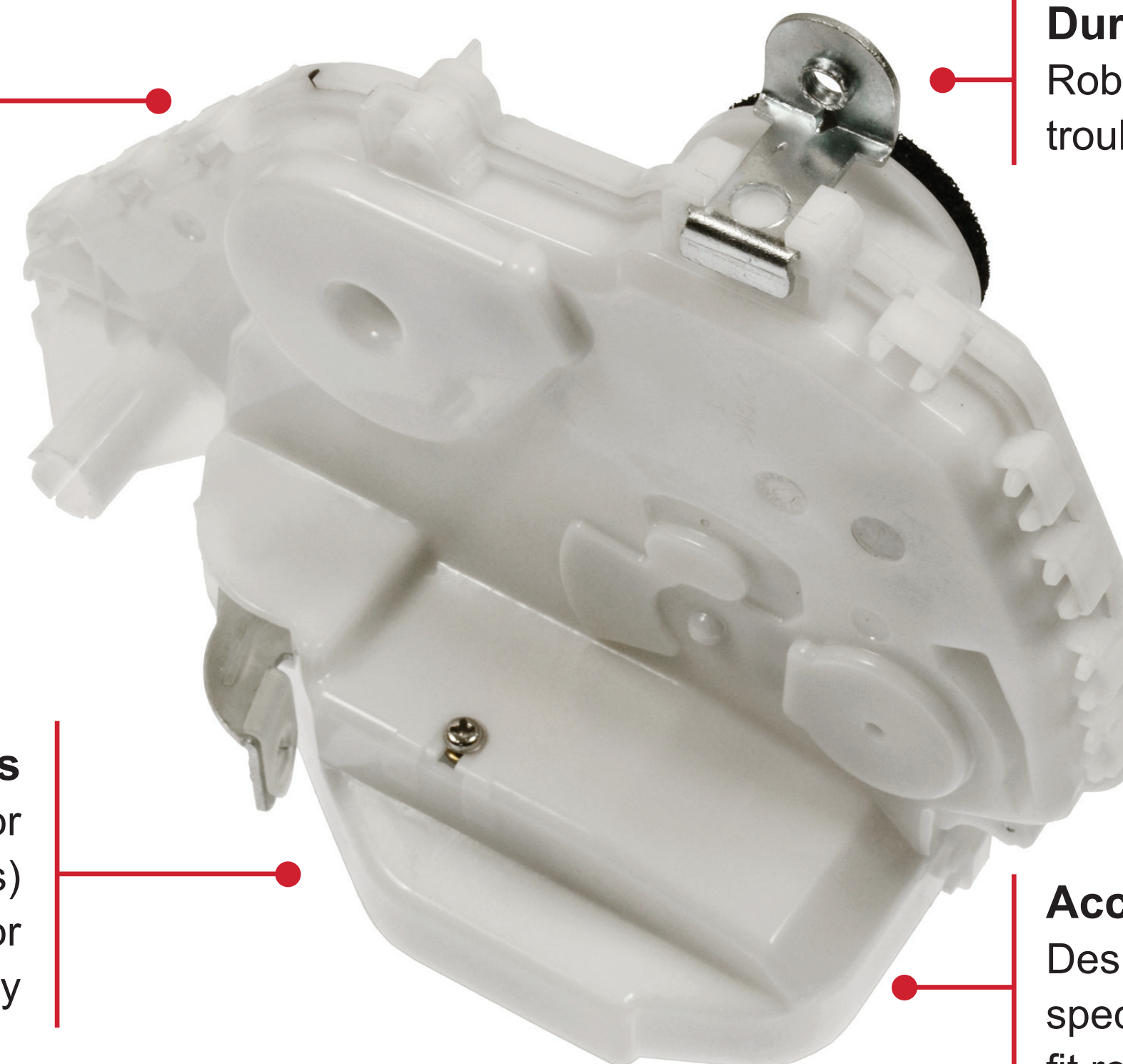
Standard® Integrated Door Lock Actuators

Easy to Install
'Plug & Play' design
means no wire splicing

Durability
Robust construction ensures long,
trouble-free service life

Meets Federal Standards
FMVSS (Federal Motor
Vehicle Safety Standards)
No. 206 requirements for door
ejection safety

Accuracy
Designed and tested to OE
specifications for a direct-
fit replacement



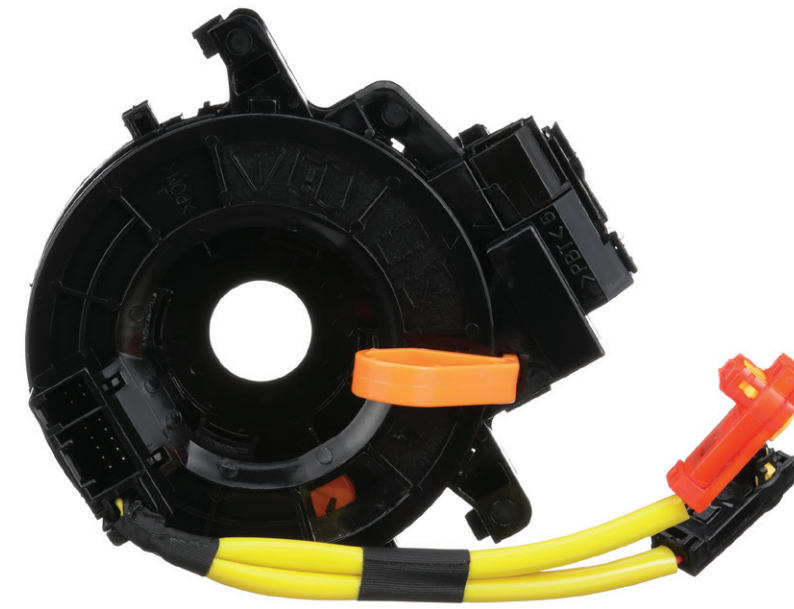
DLA1439
Honda Pilot
(2015-09)



Cabin Components

Driver-operated combination switches and airbag clock springs are vulnerable in a collision.

Standard® offers a complete line of top-quality Switches along with the supporting Connectors.



Airbag Clock Springs

When airbags are deployed, high heat is generated that melts the connector behind the airbag requiring the clock spring to be replaced.

Standard® Airbag Clock Springs are direct-fit replacements featuring premium components to ensure superior application-specific performance.

170 SKUs / VIO: 145M

Combination Switches (Multi-Function Switches)

These driver-operated switches are attached to steering columns which are designed to collapse upon impact, destroying the switch.

Designed, manufactured and tested to stringent quality standards matching the original to deliver precise vehicle-specific performance.

721 SKUs / VIO: 357M

Power Window Switches

Collisions, water damage and general wear and tear can all lead to a failed power window switch.

Standard® Power Window Switches are rigorously tested for fit, form and performance to match the original they are replacing.

1,267 SKUs / Over 1 billion repair opportunities

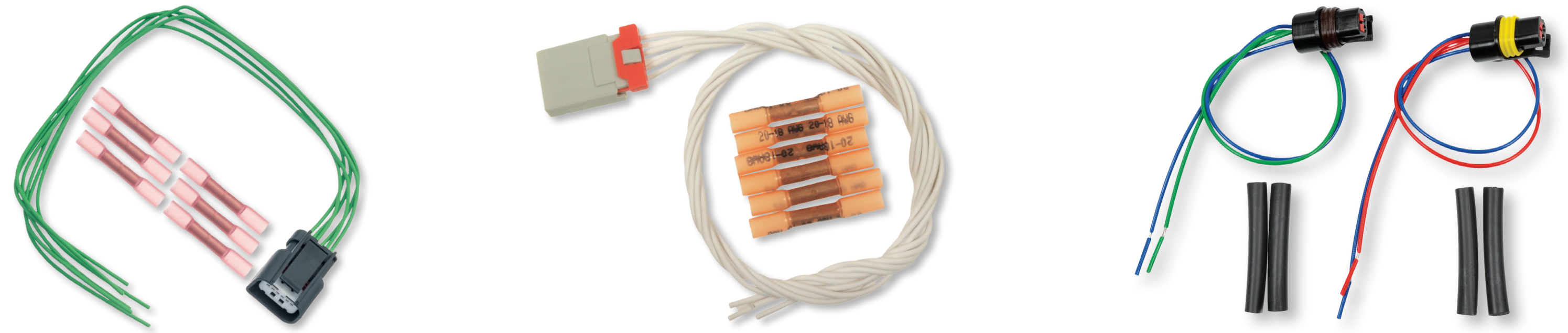


Sensor Connectors

Whenever a sensor is damaged in a collision, it is recommended that the connector is also replaced. Standard® offers more than 450 different Sensor Connectors to help get vehicles back on the road.

For more information, search “Sensor Connector” in the catalog at **StandardBrand.com**.

Standard® Electrical Sensor Connectors



ABS Sensor Connectors

Accelerator Pedal Sensor Connectors

Air Intake Temperature Sensor Connectors

Ambient Air Temperature Sensor Connectors

Blind Spot Detection Sensor Connectors

Camshaft Position Sensor Connectors

Crankshaft Position Sensor Connectors

Cruise Control Distance Sensor Connectors

EGR Valve Position Sensor Connectors

Exhaust Gas Temperature Sensor Connectors

Engine Oil Level Sensor Connectors

Engine Oil Temperature Sensor Connectors

Engine Speed Sensor Connectors

Fuel Pressure Sensor Connectors

Knock Sensor Connectors

Mass Air Flow Sensor Connectors

Misfire Sensor Connectors

Oxygen Sensor Connectors

Park Assist Sensor Connectors

Steering Angle Sensor Connectors

Vehicle Speed Sensor Connectors

...and more



Connector Kits

Standard® and Blue Streak® Connector Kits are designed to help technicians tackle common and high-demand electrical repairs with greater speed and efficiency. Each Kit includes a selection of popular, high-quality connectors and pigtails.

Organized storage and clear labeling make it easy to find the right part quickly, reducing downtime and streamlining the repair process.



Electrical Assortment Kit
STA35

Includes 16 of the top wire pigtails and sockets with a part identification card for convenient reordering



Park Assist Connector Kit
PPS1K

Includes multiple quantities of the top 5 Park Assist Sensor Connectors (64 total pieces) with applications for import and domestic vehicles



High-Temp Connector Kit
HTA41

Includes our most popular Blue Streak® High-Temp Connectors for Headlight Harnesses, Cornering Lamp Harnesses and Blower Motor Resistors



Standard® Pro Training Tech Tips

As experienced ASE-certified automotive technicians themselves, Standard® Pro Trainers are experts in engine and sensor technology.

Here's what they say to look out for when replacing a high-tech component after a collision.



Performing a “Pre-Scan” is a must for any vehicle that has been in a collision. This will alert the technician of any additional repairs required and prevent the customer from an “Ever since you” type conversation after the repair



Always refer to service information or third party services to identify which ADAS components require replacement or recalibration after a collision has taken place



Standard® Professional Training

Award-Winning In-Person, Live Virtual, and Online Learning

Standard® Pro Training delivers accredited classes that educate technicians in the latest automotive repair technologies, and techs can earn CEU credits.

An extension of Standard® training, our extensive YouTube video library has over 700 technical and installation videos.



Available Classes

ADAS Calibration Tips

ASE Test Prep - A6 Electrical /
Electronic Systems

ASE Test Prep - L4 Advanced Driver
Assistance Systems Specialist

Automotive Electrical Fundamentals

CAN Diagnostics

Electric Vehicle Safety Concerns



Available Classes

ADAS Calibration Techniques

Automotive Thermal Management -
Keeping the Car and the Customer Cool

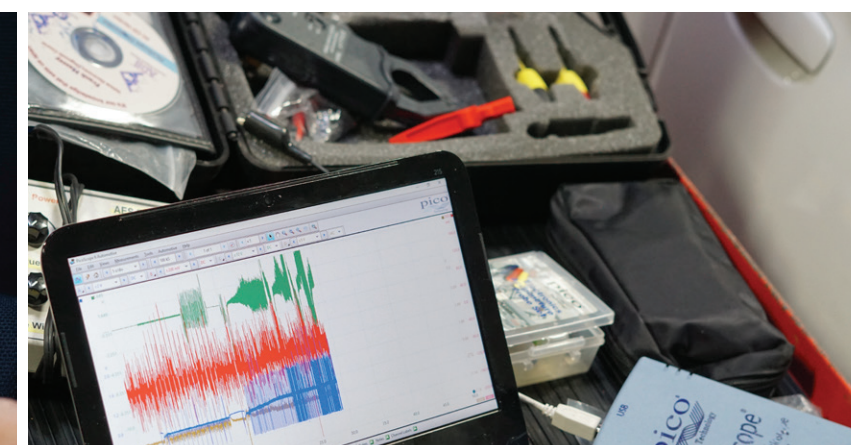
Advanced Driver Assist Systems

Control Module Diagnosis
and Programming

Vehicle Voltage Control Systems



For information on replacing collision components, search “Collision” on the **Standard Brand** YouTube channel or scan the QR code for the [Collision Repair Program playlist](#)



Collision Repair Program

StandardBrandTraining.com